

Lean Operation Accurate Measurement

Analog Meter Portable Meter

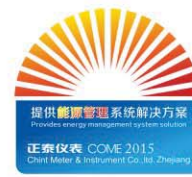


www.chintim.com Service hotline: 0577-62919999
Get more detailed information for relevant products of Chint meters 0571-56977999

Chint Group Chint Instrument & Meter Co., Ltd.
Wenzhou base: High-tech industrial park, Chint instrument & meters,
Beibaixiang, Yueqing, Wenzhou, Zhejiang Tel:0577-62877777
Fax: 0577-62919700

Hangzhou base: No.560, Yueming Road, Bingjiang Area, Hangzhou, Zhejiang.
Tel: 0571-56977777 Fax:0571-56977888

CHNT™ belongs to Chint Group





Chint has a total assets of over USD 5 billion and 29,000 employees. Business of Chint ranges from low-voltage electrical products to power transmission and distribution equipments and services , instruments & meters, building appliances, automobile parts, industrial automation, PV power generation, equipment manufacturing, etc. Chint is also the largest clean energy supplier and energy efficiency management solution provider with the most complete product ranges in China. Our products have found ready markets in more than 100 countries and regions, including Europe, Asia, Middle East, Africa, etc.



Rooted in China, Served in Global World

3 Global Development Center: Prague, Los Angeles and Shanghai

6 International Marketing Area: Aisa-Pacific, Europe, South America, North America and China

7 Manufacturing Base: Wenzhou, Hangzhou, Shanghai, Xianyang, Jiuquan, Cairo, Frankfurt

18 Logistics Centre:

Foreign—Los Angeles, St.Paul, Prague, Madrid, Moscow

17 Marketing Office:

300 Brand Flagship Stores

1000 Sales Companies



Chint Group has developed to be the leader in Chinese industrial electrical equipment production and clean energy fields.

Zhejiang Chint Electrics Co., Ltd., a subsidiary of the Group, is the largest company in terms of production and sales volume in the low-voltage electrical products industry in China as well as the first listed company specialized in low-voltage apparatus on Shanghai A Stock Market. According to the Global Challengers research report published by Boston Consulting Group, Chint is expected to be one of the 33 Chinese enterprises that are most likely to change the global industry pattern and challenge the centuried multinational companies.

Chint has been adhering to the tenet of "Continuous Learning", and has built up a complete internal training system. A matrix-type training mode with expertise longitudinally and management skills and knowledge improvement horizontally based on the job requirements and development paths for the employee of different positions and levels has been constructed. Therefore, the internal and external training resources can be effectively integrated to strengthen training effects through such new training methods as table simulation, role play, case discussion and experience-oriented learning.

To inherit the excellent corporate culture, Chint has set up a standard internal trainer team with hundreds of experienced and professional lecturers through TTT training, aiming to fully tap the internal potential and realize the inheritance of knowledge and skills.



Transportation and shipping area



Aeronautics and astronautics area



Teaching scientific research area



Series of electrical controlled equipment area

Catalogue

Pointer Analog Meter



**NP48, NP72, NP80B, NP96 Series
Pointer analog meter**
Page-01-04



**42.6 Series
Pointer analog meter**
Page-05-06



**44,59 Series
Pointer analog meter**
Page-07-08



**85, 69 Series
Pointer analog meter**
Page-09-11



**62T Series
Pointer analog meter**
Page-12



**NP96-MD/2MD-A
NP72-MD/2MD-A
Maximum demand meter**
Page-13-14

Attachment

Page-15-16



Transportation and shipping area



Aeronautics and astronautics area



Teaching scientific research area



Series of electrical controlled equipment area

Catalogue

Portable Meter



MY96 Digital multi-meter
Page-17



MY95 Digital multi-meter
Page-18



MY80 Digital multi-meter
Page-19



MY60/64 Digital multi-meter
Page-20



**NS2203 Three phase
clamp power meter**
Page-21



N266 Digital clamp meter
Page-22



MY61D Digital multi-meter
Page-23



**NS62C, NS63E Digital
clamp meter**
Page-24



**NS2001, NS2002
Digital clamp meter**
Page-25



**NAS830B, NAS838
Portable digital multi-meter**
Page-26



MF47 Pointer multi-meter
Page-27



MF667-2 Pointer multi-meter
Page-28



MY63C AC Voltage tester
Page-29



MY35F Digital Multimeter
Page-30



MY34F Digital Multimeter
Page-31



NS33F Digital Clamp Meter
Page-32



NS32A Digital Clamp Meter
Page-33



Transportation and shipping area



Aeronautics and astronautics area



Teaching scientific research area



Series of electrical controlled equipment area

MY96 Digital multi-meter



Main structure and features

MY96 is a kind of portable and intelligent multi-functional measuring meter, featured with double indication RMS analogue bar and digital multi meter with high accuracy. With functions of large liquid crystal screen, back light, data hold, incorrect operation protection, overall function overload protection, battery under-voltage indication and USB communication software, no matter professional staff, factory, school, amateur or family users, it is a dreamed multi meter.

The instrument is set with manual and automatic range, available for parameters of AC voltage, DC voltage, AC current, DC current, frequency and duty ratio, resistance, capacity, on-off buzzer, diode, triode and temperature.

Features

Display	6000
Data Hold	√
Automatic and Manual Range	√
Analogue Bar Display	√
RMS	√
USB Connection	√
Max/ Min/Largest-Smallest	√
Diode Test	√
Transistor Test	√
On-off Test	√
Backlight	√
Relative Value Measurement	√
Power Supply	4×1.5V AA battery
Weight	About 580g
Size	204mm×93mm×57mm

Technical parameter

Parameter	Range	Accuracy
DC Voltage	60mV/600mV/6V/60V/600V/1000V	± (0.7% + 2)
AC Voltage	60mV/600mV/6V/60V/600V 750V	± (0.8% + 3) ± (1.0% + 3)
DC Current	600 μ A/6000 μ A/60mA/600mA 6A/10A	± (1.2% + 3) ± (2.0% + 10)
AC Current	600 μ A/6000 μ A/60mA/600mA 6A/10A	± (1.5% + 3) ± (3.0% + 10)
Resistance	600 Ω /6k Ω /60k Ω /600k Ω /6M Ω 60M Ω	± (1.2% + 5) ± (2.0% + 5)
Capacity	10nF/1000nF/10 μ F/1000 μ F/10mF	± (3.0% + 3)
Frequency	10Hz/100Hz/1kHz/10kHz/100kHz/10MHz	± (1.0% + 5)
Duty Ratio	0.1%~99%	± 3.0%
Temperature(°C/F)	-20°C~1000°C -4°F~1832°F	± (2.0% + 2°C) ± (2.0% + 2°F)

MY95 Digital multi-meter



Main structure and features

MY95 is a kind of portable and intelligent and multi-functional measuring meter, combined with meters working on noise, illumination, humidity, temperature and digital. With functions of large liquid crystal screen, back-light, data hold, incorrect operation protection, overall function overload protection, battery under-voltage indication and USB communication software, no matter professional staff, factory, school, amateur or family users, it is a dreamt multi meter.

The instrument is set with manual and automatic range, available for parameters of AC voltage, DC voltage, AC current, DC current, frequency and duty ratio, resistance, capacity, on-off buzzer, diode, triode and temperature.

Features

Display	4000
Data Hold	√
Automatic and Manual Range	√
Diode Test	√
Transistor Test	√
On-off Test	√
Backlight	√
Relative Value Measurement	√
Power Supply	4×1.5V AA battery
Weight	About 580g
Size	204mm×93mm×57mm

Technical parameter

Parameter	Range	Accuracy
DC Voltage	400mV/4V/40V/400V/1000V	± (0.7% + 2)
AC Voltage	400mV/4V/40V/400V 750V	± (0.8% + 3) ± (1.0% + 3)
DC Current	400 μ A/4000 μ A/40mA/400mA 4A/10A	± (1.2% + 3) ± (2.0% + 10)
AC Current	400 μ A/4000 μ A/40mA/400mA 4A/10A	± (1.5% + 3) ± (3.0% + 10)
Resistance	400 Ω /4k Ω /40k Ω /400k Ω /4M Ω 40M Ω	± (1.2% + 5) ± (2.0% + 5)
Capacity	40nF/400nF/4 μ F/40 μ F/100 μ F	± (3.0% + 3)
Frequency	10Hz/100Hz/1kHz/10kHz/100kHz	± (2.0% + 5)
Noise	40dB~100dB	± 3.5%
Illumination	4000Lux/40000Lux	± 5.0%
Humidity	20°C~95°C	± 5.0%
Temperature(°C/°F)	0°C~40°C 32°F~104°F	± 2°C ± 4°F

MY80 Digital multi-meter



Main structure and features

MY80 is a new type pen digital multi meter, with stable performance, large-scaled integrated load design, equipped with overload protection and under-voltage battery. Characterized with high accuracy, low consumption, new structure, safe and reliable, it is the dreamt measuring instrument for users.

The instrument can measure the DC voltage, AC voltage, DC current, AC current, resistance, diode and connection. It also has non contact voltage detecting function, convenient to remind users to safe operation, thus users will be more safe and feel at ease.

Features

Display	2000
Data Hold	√
Automatic and Manual Range	√
Diode Test	√
On-off Test	√
Non-connect Voltage Detecting	√
Illumination	√
Power Supply	2×1.5V AAA battery
Weight	About 110g
Size	205mm×38mm×29mm

Technical parameter

Parameter	Range	Accuracy
DC Voltage	200mV/2V/20V/200V	± (0.5% + 3)
	600V	± (0.8% + 5)
AC Voltage	2V/20V/200V	± (0.8% + 3)
	600V	± (1.0% + 5)
DC Current	20mA/200mA	± (1.8% + 5)
AC Current	20mA/200mA	± (2.0% + 5)
Resistance	200 Ω /2k Ω /20k Ω /200k Ω /2M Ω	± (1.0% + 3)
	20M Ω	± (1.2% + 15)

MY60/64 Digital multi-meter



Main structure and features

MY60/64 is a trinity half high-accuracy digital multi meter, designing based on ergonomics, aesthetic and durable. Adopting A/D converter with large-scaled collected circuit, it is characterized with high accuracy and resolution, low voltage indication, fast measuring speed, strong overload ability and overall low power consumption, become the ideal tool for maintenance and reparation for smelt, manufacturing, petroleum, electrical power system and chemistry.

This series instrument can be used to measure parameters of AC voltage, DC voltage, AC current, DC current, resistance, electrical capacity, frequency, temperature, diode forward direction voltage drop, triode hFE and circuit on-off. Based on different models of products, the functions will also be different.

Features

Display	2000
Polar Indication	√
Low Voltage Indication	√
On-off Test	√
Over Range Indication	√
Range Choice	Manual
Measuring Rate	2-3t/s
Power Supply	9V 6F22 2×1.5V AA battery
Weight	About 310g
Outline Size	189mm×91mm×32mm

Technical parameter

Parameter	Range		Accuracy
	MY60	MY64	
DC Voltage	200mV/2V/20V/200V	200mV/2V/20V/200V	± (0.5% + 3)
	1000V	1000V	± (0.8% + 3)
AC Voltage	200mV		± (1.2% + 3)
	2V/20V/200V	2V/20V/200V	± (0.8% + 3)
DC Current	750V	750V	± (1.2% + 5)
	20 μ A/200 μ A		± (0.8% + 2)
AC Current	2mA/20mA	2mA/20mA	± (0.8% + 2)
	200mA/2A	200mA	± (1.2% + 2)
	10A	10A	± (2.0% + 5)
	20 μ A		± (3.0% + 7)
Resistance	200 μ A		± (1.8% + 3)
	2mA/20mA	2mA/20mA	± (1.0% + 3)
	200mA/2A	200mA	± (1.8% + 3)
	10A	10A	± (2.0% + 10)
Capacity	200 Ω	200 Ω	± (0.8% + 3)
	20k Ω /200k Ω	20k Ω /200k Ω	± (0.8% + 2)
	20M Ω	20M Ω	± (1.0% + 5)
Frequency		200M Ω	± (5.0% + 10)
		2nF/20 nF/200nF/2 μ F/20 μ F	± (3.0% + 5)
Temperature		20kHz	± (2.0% + 5)
		-40℃~ +400℃	± (1.2% + 4)
		+400℃~ +1000℃	± (1.9% + 15)

NS2203 Three phase clamp power meter



Main structure and features

NS2203 is a kind of portable intelligent power measuring meter, combined digital current meter with power measuring instrument, can be operated to measure three phase three wire, three phase four wire and single wire input information. Consisting of three channels of voltage, current and power and micro single-chip system, and equipping with strong measurement and data management software, it can measure, calculate and display parameters of current, voltage, active power, reactive power, power factor, apparent power, electrical energy, frequency and so on. With overall automatic range switching circuit, every menu can double display two kinds of measured parameters, can save 28 groups measured parameters. When it is on three-phase measurement, it can respectively measure five power parameters and three phase total power parameters for every phase. The multi-functional button control system and the two printed bar diagram can display the fluctuated value of voltage and current. This instrument is especially suitable for the measurement, detection and repair for spot electrical equipment and power supply system. Characterized with clamp portable structure, small volume, light weight, stable performance, high accuracy, easy operation, users of three phase power measurement, Ns2203 will be your ideal choice.

With overall automatic measuring range, the instrument can measure parameters of AC voltage, AC current, active power, reactive

Features

Display	9999
Automatic Turn Off	√
Automatic Range	√
Maxi/Mini Value Measurement	√
Data Hold	√
Backlight	√
RS232 Connection	√
Under-voltage Indication	√
RMS	√
Data Storage	28 groups
Power Supply	4×1.5V AA battery
Outline Size	300mm×103mm×51mm
Jaw Diameter	Φ50mm
Weight	About 580g

Technical parameter

Parameter	Range	Accuracy
AC Voltage	0.1V~600V	± (1.2% + 5)
AC Current	0.1A~1000A	± (2.0% + 5)
Active Power	0.01KW~600kW	± (3.0% + 3)
Reactive Power	0.01kvar~600kvar	± (4.0% + 5)
Apparent Power	0.01kva~600kva	± (3.0% + 5)
Power Factor	0.3~1	± (0.02% + 2)
Electrical Energy	0.001kWh~10000kWh	± (3.0% + 2)
Frequency	20Hz~1kHz	± 0.5%

N266 Digital clamp meter



Main structure and features

N266 is a kind of trinity half digital clamp meter with stable performance, safety and reliability. Adopting A/D converter with large-scaled collected circuit and equipped with overload protecting circuit for overall instrument, it is characterized with all range overload protection, low voltage indication, data hold, inductive indication and fast measurement, becoming the first choice for the electrical measurement.

Features

Display	2000
Polar Indication	√
Low Voltage Indication	√
On-off Test	√
Over Range Indication	√
Data Hold	√
Range Choice	Manual
Measuring Rate	2-3t/s
Power Supply	9V 6F22 battery
Weight	About 320g
Outline Size	235mm×90mm×40mm
Jaw Diameter	φ50mm

Technical parameter

Parameter	Range	Accuracy
	N266	
AC Current		± (5.0% + 10)
	200A	± (3.0% + 5)
	1000A	≤600A: ± (3.0% + 5)
		> 600A: not examined
DC Voltage		± (0.5% + 3)
	1000V	± (0.8% + 3)
AC Voltage		± (0.8% + 5)
	750V	± (1.2% + 5)
Resistance	200Ω	± (1.0% + 3)
	20kΩ	± (1.0% + 1)
		± (1.0% + 5)
Temperature		± (1.0% + 3)
		± (2.0% + 3)
		± (1.0% + 3)
		± (2.0% + 3)
Frequency		± (1.5% + 3)

MY61D Digital multi-meter



Main structure and features

MY61D is a kind of portable and simple digital multi-meter. Characterized with stable performance, high accuracy, low power consumption, new structure and equipped with overall overload protection, safe and reliable, it is the dream tool for measurement.

Features

Display	2000
Automatic Range	√
Backlight	√
Data Hold	√
On-off Test	√
Low Voltage Indication	√
Sample Taking Rate	About 3t/s
Power Supply	2x1.5V AAA battery
Outline Size	128mm x 61mm x 25mm
Weight	About 210g

Technical parameter

Parameter	Range	Accuracy
DC Voltage	2V/20V/200V	± (0.5% + 3)
	600V	± (0.8% + 5)
AC Voltage	2V/20V/200V	± (0.8% + 3)
	600V	± (1.0% + 5)
Resistance	2k Ω /20k Ω /200k Ω /2M Ω	± (1.0% + 3)
	20M Ω	± (1.2% + 15)

NS62C, NS63E Digital clamp meter



Main structure and features

NS62C and NS63E is a kind of portable and simple digital clamp meter, characterized with stable performance, high accuracy, low power consumption, and designed based on ergonomics, entirely equipped with overall function overload protection, safe and reliable, is the indispensable tool for electrical measurement. This instrument can measure parameters including AC current, DC voltage, AC voltage, frequency, resistance and connection, characterized with non contact voltage detecting function, which can remind users to pay attention to safe operation in time, so that they can use more safe and feel at ease.

Features

Display	6000
Automatic Range	√
Backlight	√
Data Hold	√
On-off Test	√
Low Voltage Indication	√
Automatic Turn-off	√
Sample Rate	About 3t/s
Power Supply	2x1.5V AAA battery
Outline Size	190mm×62mm×32mm
Clamp Diameter	42mm
Weight	About 260g

Technical parameter

Parameter	Range	Accuracy	
AC Current	NS62C 6A/60A/400A	NS63E 6A/60A/400A	± (2.5% + 8)
	400A-600A	400A-600A	± (3.0% + 10)
DC Voltage	600V	6V/60V/600V	± (0.5% + 3)
AC Voltage	600V	6V/60V/600V	± (0.8% + 3)
Frequency		60Hz/1000Hz	± (1.0% + 3)
Resistance	6k Ω	6k Ω /60k Ω /10M Ω	± (0.8% + 3)

MY61D Digital multi-meter



Main structure and features

MY61D is a kind of portable and simple digital multi-meter. Characterized with stable performance, high accuracy, low power consumption, new structure and equipped with overall overload protection, safe and reliable, it is the dream tool for measurement.

Features

Display	2000
Automatic Range	√
Backlight	√
Data Hold	√
On-off Test	√
Low Voltage Indication	√
Sample Taking Rate	About 3t/s
Power Supply	2x1.5V AAA battery
Outline Size	128mm x 61mm x 25mm
Weight	About 210g

Technical parameter

Parameter	Range	Accuracy
DC Voltage	2V/20V/200V	± (0.5% + 3)
	600V	± (0.8% + 5)
AC Voltage	2V/20V/200V	± (0.8% + 3)
	600V	± (1.0% + 5)
Resistance	2k Ω /20k Ω /200k Ω /2M Ω	± (1.0% + 3)
	20M Ω	± (1.2% + 15)

NS62C, NS63E Digital clamp meter



Main structure and features

NS62C and NS63E is a kind of portable and simple digital clamp meter, characterized with stable performance, high accuracy, low power consumption, and designed based on ergonomics, entirely equipped with overall function overload protection, safe and reliable, is the indispensable tool for electrical measurement. This instrument can measure parameters including AC current, DC voltage, AC voltage, frequency, resistance and connection, characterized with non contact voltage detecting function, which can remind users to pay attention to safe operation in time, so that they can use more safe and feel at ease.

Features

Display	6000
Automatic Range	√
Backlight	√
Data Hold	√
On-off Test	√
Low Voltage Indication	√
Automatic Turn-off	√
Sample Rate	About 3t/s
Power Supply	2x1.5V AAA battery
Outline Size	190mm×62mm×32mm
Clamp Diameter	42mm
Weight	About 260g

Technical parameter

Parameter	Range	Accuracy	
AC Current	NS62C 6A/60A/400A	NS63E 6A/60A/400A	± (2.5% + 8)
	400A-600A	400A-600A	± (3.0% + 10)
DC Voltage	600V	6V/60V/600V	± (0.5% + 3)
AC Voltage	600V	6V/60V/600V	± (0.8% + 3)
Frequency		60Hz/1000Hz	± (1.0% + 3)
Resistance	6k Ω	6k Ω /60k Ω /10M Ω	± (0.8% + 3)

NS2001 Digital clamp meter



Main structure and features

NS2001 are kinds of trinity half digital pincer-like meter with stable performance, safety and reliability. Adopting A/D converter with large scaled collected circuit and equipped with overload protecting circuit for overall instrument, it is featured with all range overload protection, low voltage indication, data hold, inductive indication and fast measurement, becoming the first choice for the electrical measurement.

Features

Display	2000
Polar Indication	√
Low Voltage Indication	√
Data Hold	√
Backlight	√
On-off Test	√
Over Range Indication	√
Range Choice	Manual
Measuring Rate	2-3t/s
Power Supply	9V 2x1.5 AA battery
Weight	NS2001: About 480g NS2002: About 200g
Size	NS2001: 250mm x 99mm x 46mm NS2002: 194mm x 72mm x 35mm
Clamp Diameter	NS2001: Φ42mm NS2002: Φ28mm

Technical parameter

Parameter	Range	Accuracy
	NS2001	
AC Voltage	750V	± (1.0% + 5)
		± (1.5% + 5)
DC Voltage	1000V	± (1.0% + 2)
		± (1.0% + 5)
AC Current	20A/200A/1000A	± (2.0% + 5)
		± (2.0% + 20)
Resistance	200 Ω / 2000 Ω	± (1.0% + 3)
		± (1.0% + 5)

NAS830B, NAS838 Portable digital multi-meter



Main structure and features

NAS830B and NAS838 are kinds of trinity half automatic range portable pocket-size digital multi-meter with stable performance, safety and reliability, based on ergonomics design, aesthetic and durable, characterized with functions of data hold, back light, low voltage display, automatic negative display and mal-operate protections, becoming the indispensable tool for electrical engineering.

The instrument can measure parameters of DC voltage, AC voltage, DC current, resistance, temperature, diode and on-off test for circuit. Based on different models for products, the functions will also be different.

Features

Display	2000
Data Hold	√
Backlight	√
Diode Test	√
On-off Test	√
Transistor Test	√
Automatic Negative Display	√
Power Supply	9V 6F22 battery
Outline Size	138mm x 69mm x 31mm
Weight	About 336g

Technical parameter

Parameter	Range		Accuracy
	NAS830B	NAS838	
DC Voltage	200mV/2V	200mV/2V	± (0.5%+2)
	20V/200V/600V	20V/200V/600V	± (0.8%+2)
AC Voltage	200V/600V	200V/600V	± (1.2%+10)
DC Current	200 μ A/2mA/20mA	2mA/20mA	± (1.0%+2)
	200mA	200mA	± (2.0%+2)
	10A	10A	± (3.0%+2)
Resistance	200 Ω / 2k Ω / 20k Ω /	200 Ω / 2k Ω / 20k Ω /	± (0.8%+3)
	200k Ω	200k Ω	
	2M Ω	2M Ω	± (1.0%+2)
Temperature		-20℃~400℃	± (1.0%+2)
		400℃~1000℃	± (2.0%)

MF47 Pointer multi-meter



Main structure and features

MF47 type is a kind of pointer multi-meter with multi-function, multi-usage, high-sensibility and multi-protection. This product has better mechanism strength and isolation strength, characterized with flat and thin outlook, light weight and easy-taking, becoming suitable and ideal for electrical technical area, communication area and electrical institutions.

Except measurement of parameters of AC voltage, DC voltage, DC current, resistance, temperature, the instrument can also detect transistor DC magnification. While taking advantage of fundamental frequency power supply in series to measure parameters of electrical capacity and electrical sensibility and also detect the audio level.

Features

Display	Pointer style
Transistor Measurement	√
Battery Capacity	√
Standard Resistance Box	√
LV/LT Measurement	√
Inductance Measurement	√
Capacity Measurement	√
Audio Level Measurement	√
Power Supply	9V 6F22 1.5V AA battery
Outline Size	166mm×113mm×50mm
Weight	About 600g

Technical parameter

Parameter	Range	Accuracy
AC Voltage	10V/50V/250V/500V/1000V/2500V	± 5.0%
DC Voltage	0.25V/1V/2.5V/10V/50V/250V/1000V 2500V	± 2.5% ± 5.0%
DC Current	0.05mA/0.5mA /5mA/50mA /500mA 10A	± 2.5% ± 5.0%
Resistance	R×1/R×10/R×100/R×1K/R×10K	5.0% (arc length)
Temperature	-10℃~150℃	5.0% (arc length)

MF667-2 Pointer multi-meter



Main structure and features

MF667-2 type is a kind of pointer multi-meter with multi-function, multi-usage, high-sensibility and multi-protection. This product has better mechanism strength and isolation strength, characterized with flat and thin outlook, light weight and easy-taking, becoming suitable and ideal for electrical technical area, communication area and electrical institutions. The instrument can measure parameters of AC voltage, DC voltage, DC current, resistance, circuit turn-off test and diode inductive distinguish.

Features

Display	Pointer style
Turn-off Test	√
Battery Capacity	√
Diode Inductive Distinguish	√
Power Supply	2×1.5V AA battery
Outline Size	126mm×82mm×39mm
Weight	About 180g

Technical parameter

Parameter	Range	Accuracy
AC Voltage	10V/50V/250V/1000V	± 4.0%
DC Voltage	2.5V/10V/50V/250V/1000V	± 3.0%
DC Current	2.5mA/25mA /500mA	± 3.0%
Resistance	R×1Ω/R×10Ω R×100Ω/R×1KΩ	± 3.0% ± 10.0%

MY63C AC Voltage tester



Main structure and features

MY63C is an intelligent non-contact voltage tester, when turning on the instrument's power switch, the power indicator lamp (white) illuminates. Put the instrument's probe to contact the power socket or to get near to the electric conductor, If the instrument detects AC voltage, its induction indicator lamp will flash. The relevant signal intensity indicator lamps (low, mid, high) light up, depending on the signal intensity detected, and the buzzer makes the different alarm sound. If the instrument detects common AC signal, the signal intensity indicator lamp (low, mid) both light up; if it detects highest AC signal, the signal intensity indicator lamps (low, mid, high) all light up.

Features

AC Voltage Range	AC12V-1000V
Frequency	50Hz-60Hz
Alarming Mode	Sound-light-alarm
Flashlight	White LED
Automatic Turn-off	√
Low Voltage Indication	√
Probe Shape	Prolate
Natural wire and line wire distinguish	Sound(high, medium and low)and LED light
NCV Sensitivity	Automatic choice for 3 sensitivity(high, medium and low)
Power Supply	2×1.5V AAA battery
Weight	45g
Outline Size	156mm×20mm×20mm

MY35F Digital Multimeter



Main structure and features

MY35F is a portable digital meters with stable performance and high reliability. The design of the complete circuit adopts A/D converter with double integration of large-scale integrated circuit, equipped with the overall functional overload protection. It is characterized with full-range overload protection, low voltage indication, data hold, polarity indication and rapid measuring speed, to be an ideal tool for the laboratory, factory, radio enthusiasts and family.

The instrument can measure parameters including DC voltage, AC voltage, DC current, AC current, resistance, capacitance, frequency, temperature, diode, circuit on-off test and thyristor hEF test.

Features

Display	2000
Polar Indication	√
Low Voltage Indication	√
On-off Test	√
Over Range Indication	√
Data Hold	√
Range Choice	Manual
Measuring Rate	2-3t/s
Power Supply	9V 6F 22 battery
Weight	About 310g
Outline Size	182mm×87mm×40mm

Technical parameter

Parameter	Range	Accuracy
DC Voltage	200mV/2V/20V/200V	± (0.5%+2)
	1000V	± (1.2%+5)
AC Voltage	2V/20V/200V	± (0.8%+3)
	750V	± (1.2%+3)
DC Current	2mA/200mA	± (1.2%+2)
	20A	± (2.0%+2)
AC Current	200mA	± (1.8%+3)
	20A	± (3.0%+7)
Resistance	200 Ω /2k Ω /20k Ω /200k Ω /2M Ω	± (0.8%+2)
	20M Ω	± (1.2%+2)
	200M Ω	± (5.0%+10)
Capacitance	20nF/200nF/2 μ F/20 μ F/200 μ F	± (4.0%+5)
Frequency	200KHz	± (1.5%+5)
Temperature		± (1.0%+8)
		± (1.5%+15)

MY34F Digital Multimeter



Main structure and features

MY34F is a trinity half byte digital multimeter with high accuracy, designing based on ergonomics, aesthetic and durable. Adopting A/D converter with large-scaled collected circuit, it is characterized with high accuracy and resolution, low voltage indication, rapid measuring speed, strong overload ability and overall low power consumption, becoming the ideal tool for maintenance and reparation for industries including smelt, manufacturing, petroleum, electrical power system and chemistry. It can measure parameters including AC voltage, DC voltage, AC current, DC current, resistance, capacitance, frequency, temperature, diode, crystal transistor hEF and circuit on-off test.

Features

Display	2000
Polar Indication	√
Low Voltage Indication	√
On-off Test	√
Over Range Indication	√
Data Hold	√
Range Choice	Manual
Measuring Rate	2-3t/s
Power Supply	9V 6F 22 battery
Weight	About 380g
Outline Size	187mm×90mm×50mm

Technical parameter

Parameter	Range	Accuracy
DC Voltage	200mV/2V/20V/200V	± (0.5%+1)
	750V	± (0.8%+2)
AC Voltage	2V/20V/200V	± (0.8%+3)
	750V	± (1.2%+3)
DC Current	2mA	± (0.8%+1)
	2mA/200mA	± (1.5%+1)
	10A	± (2.0%+5)
AC Current	2mA/20mA	± (1.0%+3)
Resistance	200mA	± (1.8%+3)
	10A	± (3.0%+7)
Capacitance	200 Ω	± (0.8%+3)
	2k Ω /20k Ω /200k Ω /2M Ω	± (0.8%+1)
Frequency	20M Ω	± (1.0%+2)
	200M Ω	± (5.0%+10)
Temperature	20KHz	± (1.5%+5)
		± (5.0%+4)
		± (1.0%+3)
		± (2.0%)

NS33F Digital Clamp Meter



Main structure and features

NS33F is a trinity half byte digital clamp meter with stable performance and safe reliability. The design of the complete circuit adopts A/D converter with double integration of large-scale integrated circuit, equipped with the overall functional overload protection. It is characterized with full-range overload protection, low voltage indication, NCV non contact AC voltage detection, working lamp illumination, making it to be a electrical instrument with exterior performance. It can measure parameters including DC voltage, AC voltage, AC current, resistance, diode and circuit on-off test.

Features

Display	2000
Polar Indication	√
Low Voltage Indication	√
On-off Test	√
Over Range Indication	√
Data Hold	√
Range Choice	Manual
Measuring Rate	2.5-3t/s
Power Supply	DC 1.5V ×3 AAA battery
Weight	About 280g
Outline Size	218mm×78mm×32mm
Jaw Diameter	Φ26mm

Technical parameter

Parameter	Range	Accuracy
DC Voltage	200mV/2V/20V/200V	± (0.8%+2)
	600V	± (1.0%+2)
AC Voltage	2V/20V/200V	± (1.0%+5)
	600V	± (1.2%+5)
AC Current	2A/20A	± (3.0%+15)
	200A/600A	± (2.5%+5)
Resistance	200 Ω /2k Ω /20k Ω /200k Ω /2M Ω	± (1.2%+2)
	20M Ω	± (2.0%+5)

